

Overview

MGG Aluminum Alloy Tubular Busbar Fixed Support Type. MGG Type Tubular Bus-Bar Fitting is hot-dip galvanized steel.

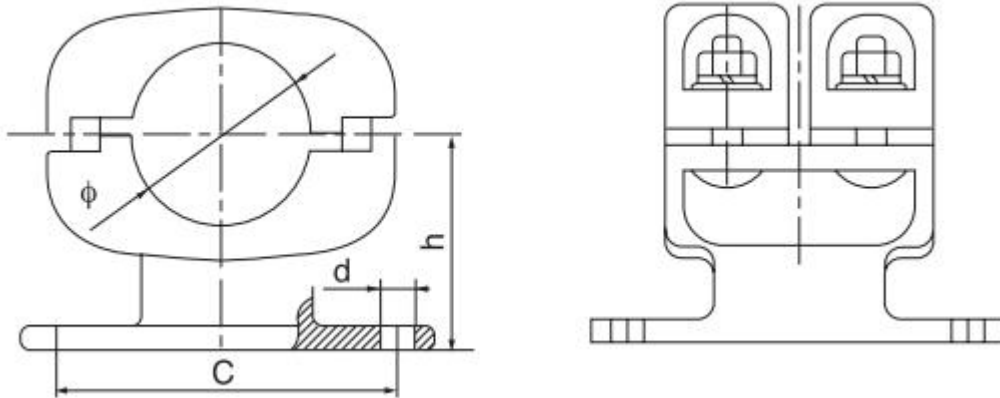
Bus-bar supports are used to fix or hang bus-bars on insulators at the substation, including rectangular channel, tube bus and cable supports in accordance with bus type.

Features of Galvanized MGG Tubular Bus-Bar Fitting:

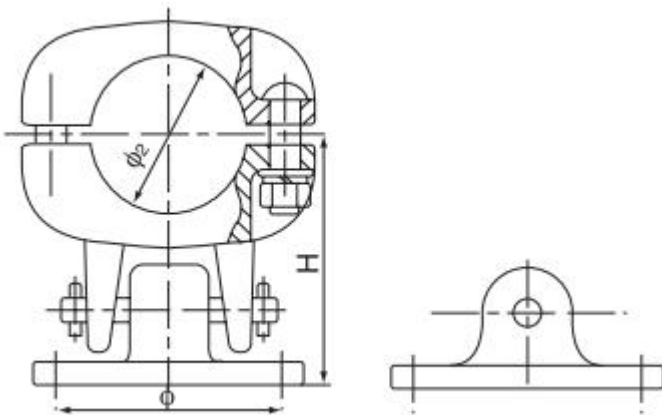
Clamping bolts have hex-stops for one-wrench installation.

Cap screws are supplied for upright mounting.

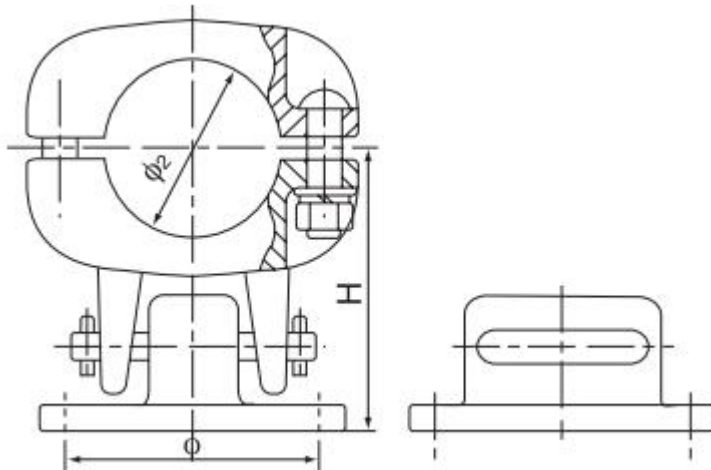
MGG Tubular Busbar Supports



MGG1 Tubular Busbar Supports



MGG2 Tubular Busbar Supports



Parameter

Catalog No.	Suitable Busbar (mm)	Dimensions(mm)				Weight (kg)
		φ	C	d	h	

MGG-70	70/64	70	140	14	90	2.8
MGG-80	80/72	80	140	14	98	4
MGG-90	90/80	90	140	14	102	4.3
MGG-100	100/90	100	140	14	114	4.5
MGG-110	110/100	110	140	14	--	--
MGG-120	120/110	120	140	14	122	5.3
MGG-130	130/116	130	140	14	135	7.3
MGG-150	150/136	150	225	18	150	8.4
MGG-170	170/156	170	225	18	170	9.5
MGG-200	200/180	200	225	18	190	13.5
MGG-250	250/230	250	254	18	215	19.5